



There is only one winner



”Selected when it counts”

The Competitor Racing Lanes have been selected at the following major championships:

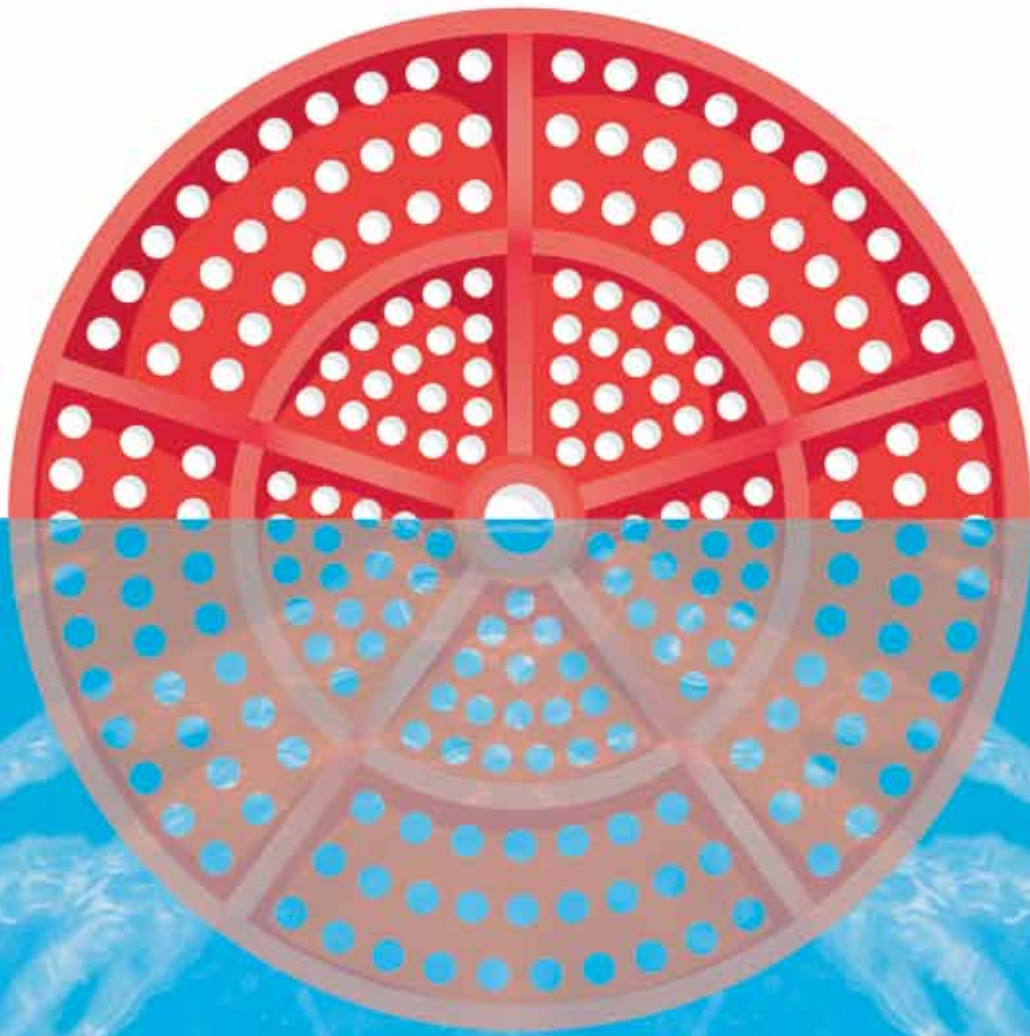
- 2016 FINA World Swimming Championships S.C. - Windsor
- 2015 FINA World Championships - Kazan
- 2014 FINA World Swimming Championships S.C. - Doha
- 2013 European Championships S.C. - Herning
- 2013 FINA World Championships - Barcelona
- 2012 Olympic Games - London
- 2012 FINA World Swimming Championships (25m) – Istanbul
- 2012 European Championships S.C. - Chartres
- 2012 European Championships - Debrecen
- 2012 European WP Championships - Eindhoven
- 2011 European Championships S.C. - Szczecin
- 2011 Arab Games - Doha
- 2011 FINA World Championships – Shanghai
- 2011 Final Four WP - Rome
- 2011 FINA Junior World Championships - Peru
- 2011 European Youth Olympic Games - Trabzon
- 2011 University Games - Shenzhen
- 2010 FINA World Swimming Championships (25m) – Dubai
- 2010 European Championships S.C. – Eindhoven
- 2010 Asian Games – Guangzhou
- 2010 Commonwealth Games – Delhi
- 2010 European WP Championships – Zagreb
- 2010 World Masters Championships – Göteborg
- 2010 European Championships – Budapest
- 2010 Final Four WP – Naples
- 2009 European Championships S.C. – Istanbul
- 2009 FINA World Championships – Rome
- 2008 Olympic Games – Beijing
- 2008 Open de Paris
- 2008 European Championships S.C. - Rijeka
- 2008 European Championships – Eindhoven
- 2007 European Championships S.C. – Debrecen
- 2007 Open de Paris
- 2006 Asian Games – Doha
- 2006 European Championships S.C. – Helsinki
- 2006 European Championships – Budapest
- 2005 West Asian Games – Doha
- 2005 European Championships S.C. - Trieste
- 2005 FINA World Championships – Montreal
- 2004 Olympic Games – Athens
- 2004 European Championships S.C. – Vienna
- 2004 European Championships – Madrid
- 2003 European Championships S.C. – Dublin
- 2002 European Championships S.C. – Riesa
- 2002 European Championships - Berlin
- 2002 FINA World Swimming Championships (25m) – Moscow
- 2001 European Championships S.C. – Antwerpen
- 2000 European Championships S.C. - Valencia
- 2000 FINA World Swimming Championships (25m) – Athens
- 1999 European Championships S.C. – Lisbon
- 1999 European Championships - Istanbul
- 1999 FINA World Swimming Championships (25m) – Hong Kong
- 1998 FINA World Championships – Perth
- 1997 European Championships - Sevilla
- 1997 FINA World Swimming Championships (25m) – Gothenburg
- 1996 European Championships S.C. – Rostock
- 1995 European Championships – Vienna
- 1993 European Championships – Sheffield
- 1992 European Championships S.C. - Espoo
- 1992 Olympic Games - Barcelona
- 1991 European Championships S.C. – Gelsenkirchen
- 1989 European Championships - Bonn
- 1988 Olympic Games - Seoul
- 1987 European Championships - Strasbourg
- 1986 FINA World Championships – Madrid
- 1985 European Championships - Sofia
- 1984 Olympic Games – Los Angeles
- 1982 FINA World Championships – Guayaquil
- 1981 European Championships - Split
- 1980 Olympic Games - Moscow
- 1979 FINA Cup - Tokyo
- 1978 FINA World Championships – Berlin
- 1977 European Championships - Jönköping
- 1976 Olympic Games - Montreal



Official supplier



Istanbul 2012



The Difference

COMPETITOR Racing Lane's patented flow-through design controls water turbulence by allowing wave energy to be dispersed along the length of the wave. Each COMPETITOR racing lane consists of a series of 100 mm and 150 mm polyethylene discs and donuts strung on a stainless steel cable. Each disc is designed to rotate independently of the others. This allows the wave energy to be absorbed and dispersed within the lane. This wave reduction optimizes pool conditions for training and competition.

COMPETITOR has been the leader in racing lane technology from the start. Known worldwide as the King of the Lane, COMPETITOR's history begins at the 1976 Summer Olympics with the introduction of the "Wave Killer". In 1992, the COMPETITOR "Gold" Technology was introduced at the Summer Olympics in Barcelona, Spain. Since then COMPETITOR has kept its place as the leader and is a must for your swimming and water sports facilities.





Classic Colours - Blue and White Malmsten:

A combination of 5 metre red at both ends with the classical blue and white sections.

The swimming rule markings will be:

For a 25, 33 and 50-metre lane two black 15-metre markings.

For a 50-metre lane line a red 25-metre marking.

Custom colour combinations for lane lines and markings are available, and standard colours are red, blue, white, black, green and blue.

The classical combination could be combined with three (3) leading lanes in yellow for lanes 4 and 5.



FINA Championship colours:

For 8 swimming racing lanes:

Two (2) green for lanes 1 and 8.

Four (4) blue for lanes 2, 3, 6 and 7.

Three (3) yellow for lanes 4 and 5.

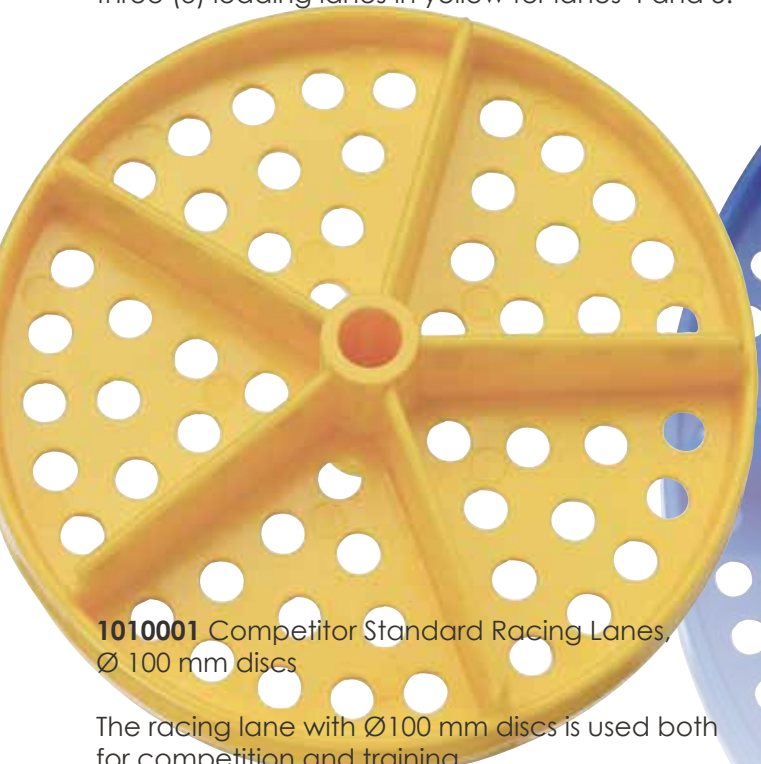
For 10 swimming racing lanes:

Two (2) green for lanes 0 and 9.

Six (6) blue for lanes 1, 2, 3, 6, 7 and 8.

Three (3) yellow for lanes 4 and 5.

All swimming rule markings will be in red.



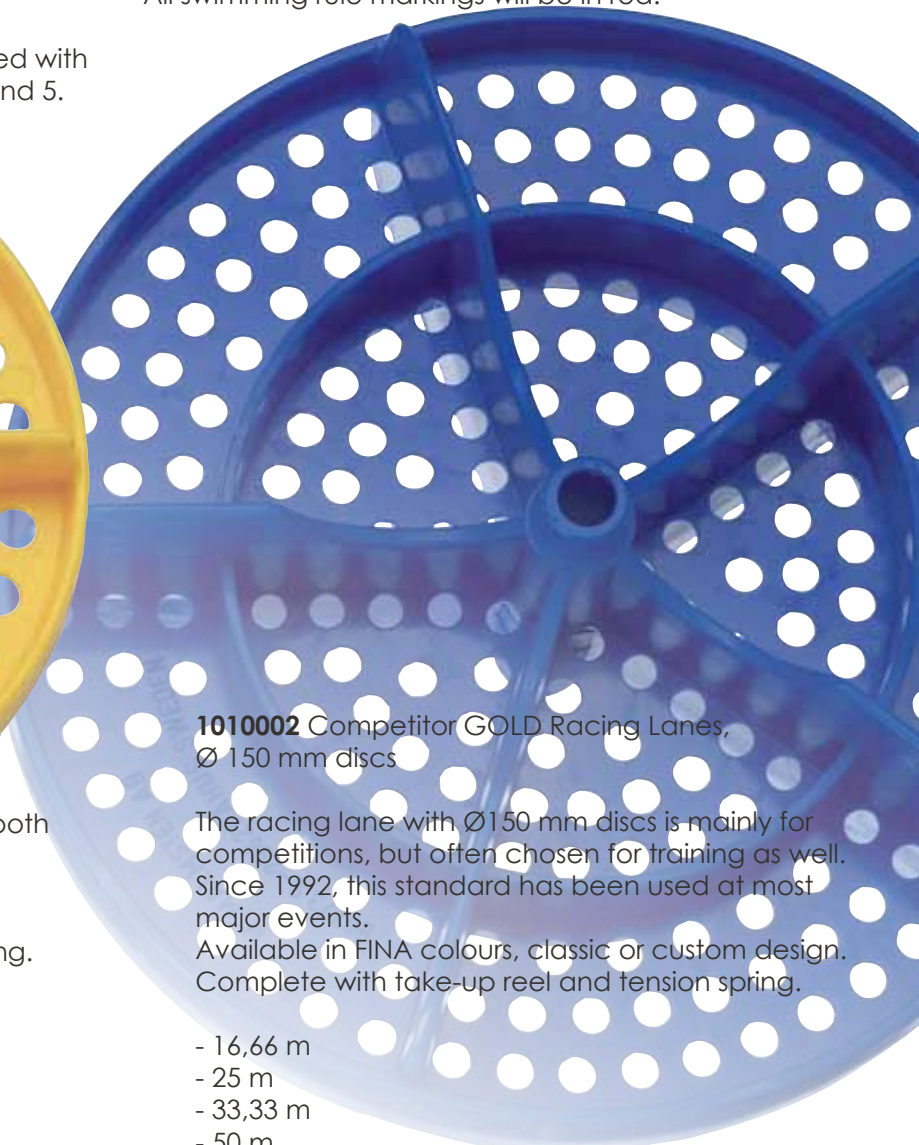
1010001 Competitor Standard Racing Lanes,
Ø 100 mm discs

The racing lane with Ø100 mm discs is used both for competition and training.

Available in FINA colours, classic or custom design.

Complete with take-up reel and tension spring.

- 16,66 m
- 25 m
- 33,33 m
- 50 m
- Special lengths



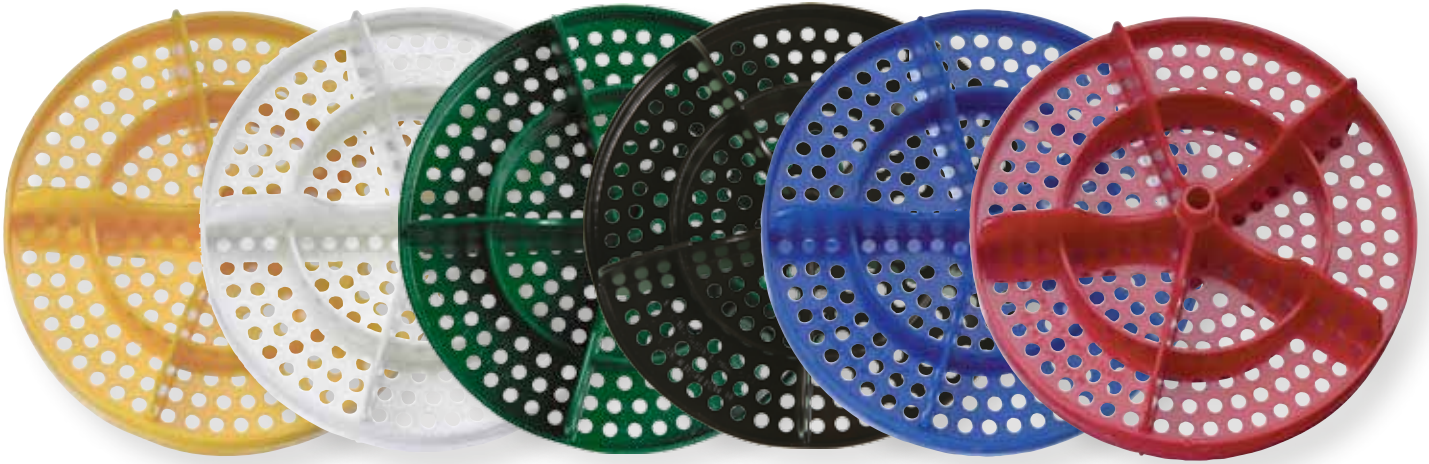
1010002 Competitor GOLD Racing Lanes,
Ø 150 mm discs

The racing lane with Ø150 mm discs is mainly for competitions, but often chosen for training as well. Since 1992, this standard has been used at most major events.

Available in FINA colours, classic or custom design. Complete with take-up reel and tension spring.

- 16,66 m
- 25 m
- 33,33 m
- 50 m
- Special lengths

Spare parts sold exclusively for the Competitor brand:



1011003 Disc for Competitor Gold, Ø 150 mm
Price per unit. Minimum 360 units/colour



1011003 Disc for Competitor Standard, a pair of one female and one male disc, Ø100 mm
Price per unit - sold in pairs only. Minimum 750 pairs/colour.



1011004 Donut Float Ø 70 mm
Price per unit. Minimum 900 units/colour.



Malmsten



1011021 Lane Slider

Makes your Competitor Racing Lane last longer. The Competitor Racing Lane runs smoothly over the Lane Slider and will therefore not be damaged from the hard edge of the pool. It also spares the pool edge from wear and tear and makes the taking-up alot easier.



1816004 False start mechanism

Easy to use false start mechanism. Made from stainless steel EN1.4404 and fits our stainless steel post (sold separately). A soft covered nylon false start rope, with a leaded core, may be easily affixed (sold separately). This mechanism has an inner diameter of 40 mm and comes equipped with a snap hook for affixing in post eyelet.



1011009 Competitor Spring Cover

Popular red spring covers for Competitor racing lanes for swimming. Used for competition and training to cover the tension spring. Dimensions: 150 mm and 135 mm i diameter. Made from vinyl-coated PVC foam.

Spare parts sold exclusively for the Competitor brand:



1011010 Tension Spring, stainless steel*

1011018 Take-up Reel with 'S' Hook, stainless steel*, and Plastic Cover

1011009 Take-up Reel Cover only

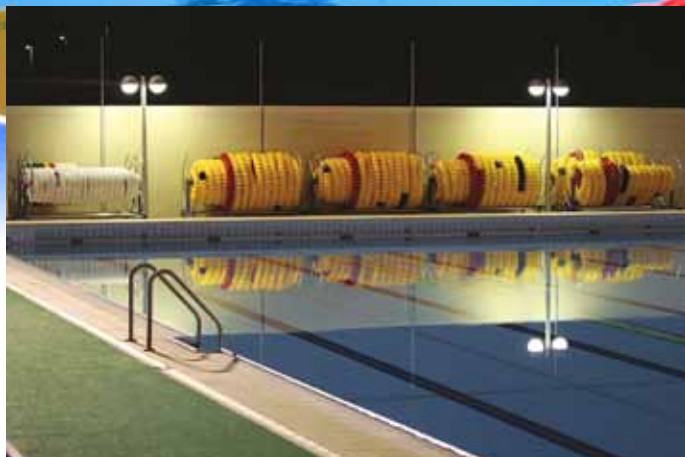


1011005 Cable, stainless steel*, 4 mm



1011011 Wire Lock, stainless steel*

* EN 1.4404, AISI 316



1012001

Storage Trolley Malmsten - Stainless steel* – Partly powder coated. 4 stainless steel swivel castors (2 lockable).

| Measurement | Capacity Standard Racing Lane | Capacity Gold Racing Lane | Weight | Max load |
|-------------------|-------------------------------|---------------------------|--------|----------|
| 1910x1250x1410 mm | 150 meters | 75 meters | 50 kg | 260 kg |
| 2460x1250x1410 mm | 200 meters | 100 meters | 55 kg | 267 kg |

* EN 1.4404, AISI 316



Competitor Gold Lane Numbers - With the Competitor Gold Racing Lanes the Lane Numbers can be added for championships to ease in the identification of swimmers to the public and the media. The Competitor Lane Numbers are made to fit only Competitor Gold Racing Lanes.

1011012 Lane Numbers printed onto both sides, black on yellow foam material. Equipped with 2 pairs of weights, to ensure a good placement, and durable plastic clip to attach it onto the lane.

To insure a perfect functionality install your Competitor Racing Lanes with



2010001 Floor Anchor
 Ø 40 mm, size:100x95x95 mm, stainless steel*
 - Floor Anchor levelled
 - Floor anchor 4°
 - Floor anchor 8°



1013001 Lane Post
 Ø 40 mm, height: 165 mm, stainless steel*. Fits our Floor Anchors (sold separately)



2010002 Multi-functional anchor with hidden eyelet
 Nicely designed anchor in stainless steel.*
 Used for in-wall fixations, pool deck anchoring or as an underwater eyelet. This ergonomic anchor has a foldable eyelet, which is hidden when not in use.
 To be bolted with a face plate 95 x 95 mm and back plate 140 x 140 mm. Anchor depth of 34 mm.



2017002 Cover for Floor Anchor
 Ø 40 mm, stainless steel*
 - Cover levelled (11282)
 - Cover 8° (11281)



2010002 Starting Block Malmsten
 Nicely designed starting block in stainless steel* and painted for added protection.
 Top is 500 x 700 mm, and equipped with an excellent anti-slip surface.



2010002 Starting Block Malmsten with track start
 This starting block is the same as the Starting Block Malmsten but equipped with a track start, an adjustable block, so that swimmers may take advantage of the popular new starting technique. The track start is approved by FINA to be used in competitions.

Storage under pool deck

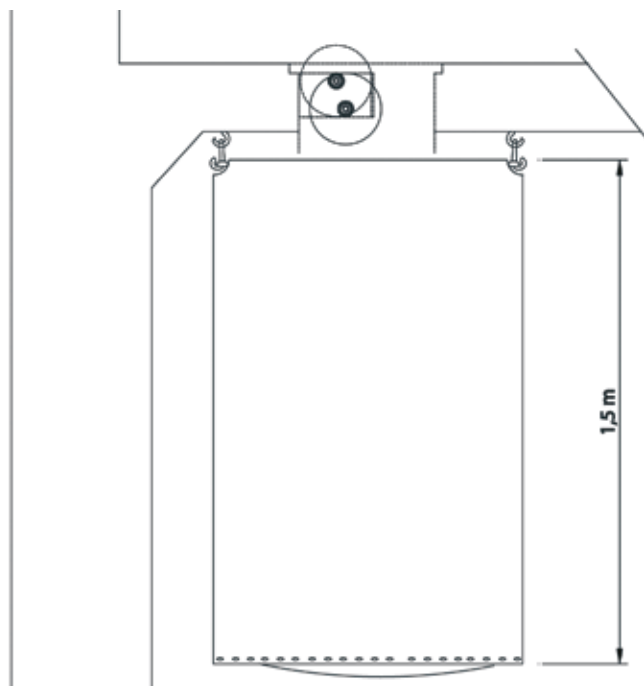


2010004 Storage trap

A storage trap with a protective roll mechanism and a floor cover plate. To be used for storage of the lanes under the pool deck.

A stainless steel* floor plate Ø 350 mm, with an anti-slip cover.

Suitable for all Competitor lane ropes.



1011001

Storage Bags in blue reinforced PVC, equipped with reinforced openings for hanging and drainage

- Bag for Competitor Standard racing Lane 25 m,
- Bag for Competitor Standard racing Lane 50 m,
- Bag for Competitor Gold racing Lanes 25 m,
- Bag for Competitor Gold racing Lane 50 m,



1011002

Competitor Ratchet Wrench

This is the only tool to be used with the Competitor Take-up-Reel.

A Ratchet Wrench is always included with the purchase of the Competitor Lanes.

Important! Use only the original Competitor Ratchet Wrench - note that other tools might damage the Take-up Reel.

Six sided tightening mechanism, length: 26 cm, weight: 0,256 kg, chromium plated steel

Official Water Polo Equipment

As official supplier we carry a complete range of endorsed and approved equipment for water polo.



Competitor Water Polo field of play

The Competitor Water Polo Fields of Play are made according to FINA and LEN rules. They may be made for men, women, master or any custom sized field. A performing field for players and audience.

Competitor Water Polo Fields are complete with Tension Springs and Take-up Reels.

The goal lanes attach directly to the hooks on the goals. The lanes of the Water Polo field are fitted to wall or Floor Anchors (not included)

Our fields are constructed with the wave-damping effects of the Competitor patented flow-through design which controls water turbulence by allowing wave energy to be dispersed along the length of the wave. Each field consists of a series of 100 mm polyethylene discs and donuts strung on a stainless steel cable. Each disc is designed to rotate independently of the others. This allows the wave energy to be absorbed and dispersed within the lane. This wave reduction optimizes pool conditions for training and competition.

According to FINA rules the distance between the respective goal lines shall be 30.0 metres for games played by men and 25.0 metres for games played by women. The width of the field of play shall be 20.0 metres. For masters the distance shall be 23.5 metres minimum between the respective goal lines and the uniform width shall be 17 metres minimum.



1515003 Water Polo Referees' catwalk

Used for officials and placed alongside the field of play. It is sold in 32 metres lengths, 1 metre wide, and is made with colour coded sections that may be adjusted from men to women size fields. Made with a strong aluminium framework and water resistant non-slip plywood top. Height 0,6 m.



1514010 Transportation boxes for the water polo referees' catwalk

Solid and easy to use transportation boxes on swivel castors. Sold per box. 2 boxes required per 32 m referees' catwalk.



Official supplier

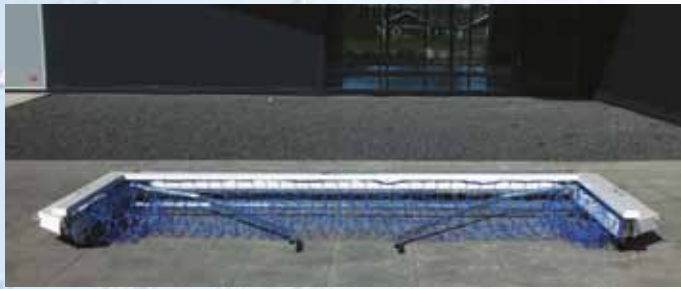


EBAAČKI
DING d.o.o.

HRT Croatian
Radiotelevision
Malmsten



1515001 Malmsten Advertising Structure, inflatable and free floating
Useful for many aquatic events. 4 units of 9,9 m long. 1,65 m base and 1 m high, equipped with Velcro for placement of custom made advertising banners (banners are not included).
Possibility of 2 banners facing pool and 1 banner facing the stands.
Each unit shipped and stored in a carrying bag. 2 electrical pumps included with purchase.



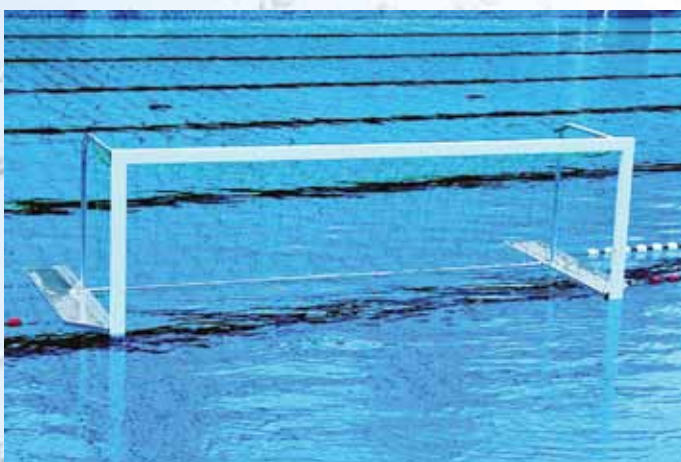
1511003 Malmsten Water Polo Goal - new design

This official water polo goal, made according to FINA rules, is a free-floating model.

This new improved design comes ready to be used; lift frame, bolt it, place net and put in water.

The goals are foldable for easy storage and transportation.

Each goal is 3 m wide and 90 cm high. The frame measures 75 x 40 mm. It is easy to hook on our goal lanes and a TV camera arm may be installed (not included) onto the back float of the goal. The goals are always sold in pairs of two. The white powder painted frame is made from aluminium profiles. Four swivel castors for easy handling.



1511002 Klapp-Ex Water Polo Goal free floating

The Water Polo Goal Klapp-Ex models are either free floating or wall mounted. Each goal is 3 m wide and 90 cm high. The nets are sold separately, however the goal comes equipped with net hooks. The free floating model comes with floating elements and balance weights. Its foam filled base, of aluminium, guarantees a good water position. The wall mounted model comes equipped to fit floor anchors (40mm floor anchors are sold separately) The goals are always sold in pairs of two. It may be folded for storage when not in use.



1011009 Competitor Spring Cover

Popular white spring covers for goal lanes hooking onto water polo goals. Used for competition and training to cover the tension spring.

Dimensions: 150 mm and 135 mm i diameter. Made from vinyl-coated PVC foam.



1514007 The Water Polo Ball Release System

The Ball Release is centred in the water polo field and carries the ball before game start. When the game starts, the ball release is submerged and Water Polo Ball is put into play.

It is submerged by pulling the rope from the anchor side of the pool. It is made of EVA foam, high density plastic and stainless steel, and is designed to hold both men and women Water Polo Balls. In order to use this release system, two eyebolts need to be installed at the bottom of the pool.



1514008 Underwater eyelet

Plastic plate 30 x 30 cm, white or black, for anchoring the water polo ball release system or any other floating equipment.

Removable snap hook.

Affixed with underwater glue, the Ultra grip R.

LED visual equipment for swimming and water polo



Water Polo visual system

The visual marker system for water polo, named WVS, "Water polo visual system" is a high level spectacular system that makes use of LED markings placed in specific areas inside and outside the pool. These LED markers update athletes, referees, judges, the audience and the television viewers on the progress of the game.

WVS also helps the inexperienced audience to COMPREHEND AT BEST the game and guarantees a more accurate transparency for referees and judges during a match.



Virtual trainer for swimmers

The Myrtha Pools Virtual Trainer is an innovative, patented wireless system used to monitor the performances of swimmers during training time. The system controls a LED strip that runs along the whole length of the pool and is waterproof.

The strip can be placed either on the pool floor or on the water surface along the floating lane line. At the beginning of the training session the strip receives programmed impulses that progressively switch on the LED lights according to a previously established time and for a specific number of laps. The athlete's point of reference is the constant light flow and he can easily check whether his rhythm is in line with his program or if he is too slow or too fast. The LED intensity allows for perfect visibility in any light condition.



1514009 Water Polo ball holder

Ball holder to be placed on water polo referees' catwalk.

Made from Polycarbonate.

Measurements: 0,65 x 0,24 x 0,75 metre

1512001

Mikasa – the ball of choice – since 1980 Mikasa has been the Olympic Water Polo Ball of choice. FINA approved ball, hand buffed rubber cover and precision nylon wound.



W6000 Mikasa

W6000C Mikasa

W6000W Mikasa

Men's Water Polo Balls. Official men size and weight.



W6009 Mikasa

W6009C Mikasa

W6009W Mikasa

Women's Water Polo Balls. Official women size and weight.

Junior Water Polo (W6008 Mikasa) Balls and Water Polo Balls for training (W6600 Mikasa) also available.



1512002 Water Polo Ball WP5
Official men size



1514003 Double Barrel Air
Pump Mikasa



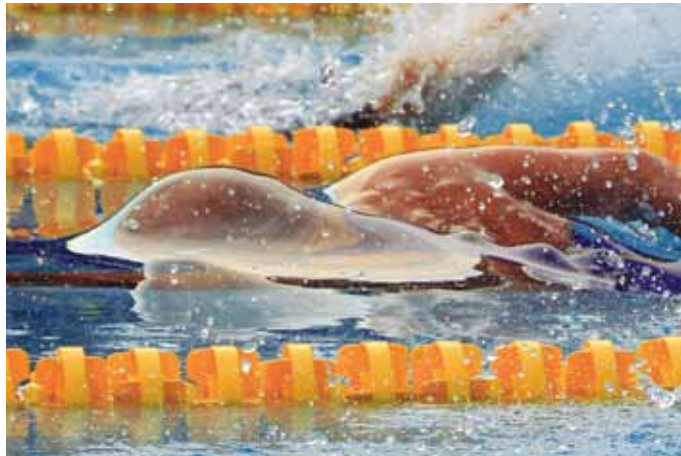
1512002 Water Polo Ball WP4
Official women size



1514004 Ball Pressure
Gauge Mikasa



1514005 Water Polo Ball Carrier Mikasa
for up to 20 balls. Foldable
when not in use.



Malmsten AB, Box 73, 296 21 ÅHUS, Sweden
Tel: +46 (0)44-247150 Fax: +46 (0)44-247435
info@malmsten.com www.malmsten.com